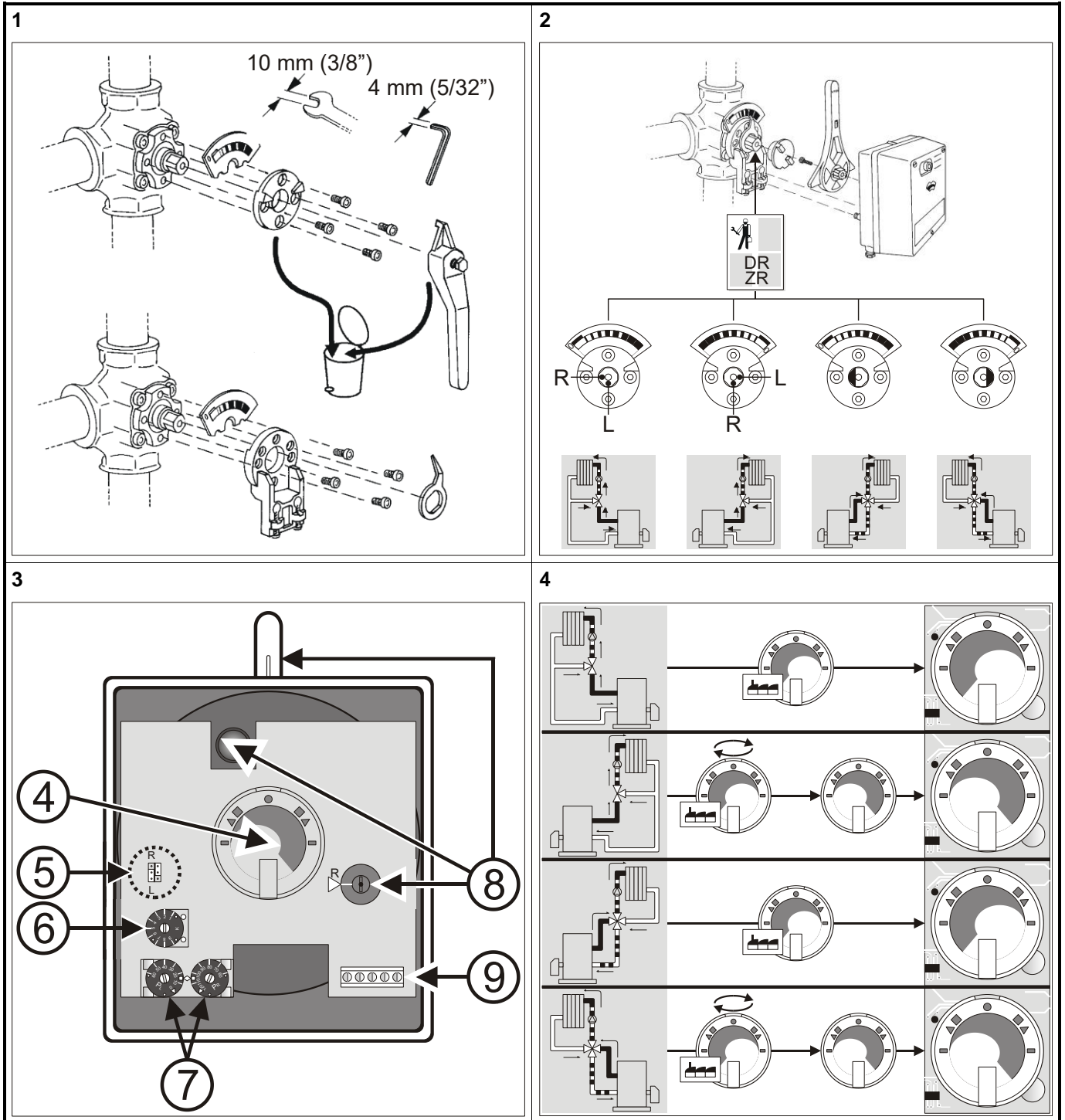


Rotary Actuator M7061

D Montageanweisung
 F Instructions d'installation
 I Istruzioni di montaggio
 NL Installatievoorschrift
 DK Installationsinstruktus
 N Installationsinstruktioner
 FIN Asennusohje
 S Installation instruktioner
 E Instrucciones de montaje

INSTALLATION INSTRUCTIONS



5

	R 0...10V 2...10V	Y = 10 V 90° CW
	R 0...10V 2...10V L	Y = 10 V 90° CCW
	R 0...10V 2...10V	Y = 10 V 90° CW
	R 0...10V 2...10V L	Y = 10 V 90° CCW

6

K=1

K=3

K=5

K=7

K=9

Graph showing angle (°) vs Y (0% to 100%) for K=1, 3, 5, 7, 9. Curves are concave down, starting at 0° and ending at 90°.

7

$P_L + P_R = \sphericalangle 90^\circ$

$P_L + P_R = \sphericalangle 120^\circ$

8

9

Terminal block with 5 terminals. Terminals 1, 2, 3, 4, 5 are shown. Terminals 2, 3, 4 are connected to a 24V~ source and a Y source (0...10V- / 2...10V-).

0% :

100% :