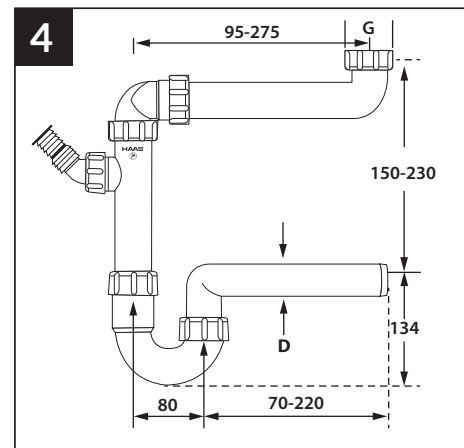
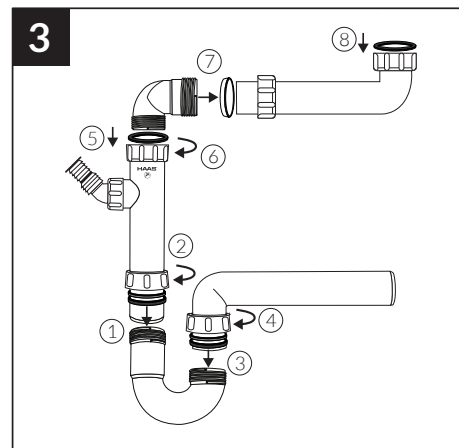
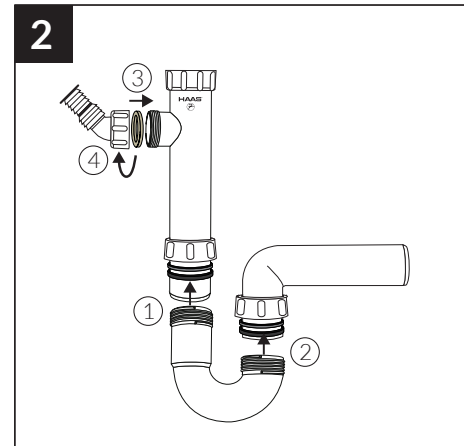
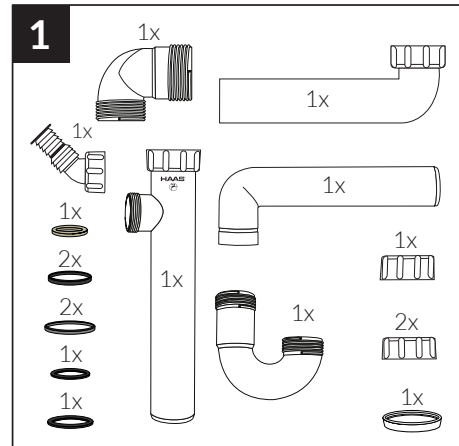


**4**

Technical drawing of a 90° elbow fitting. The drawing shows the fitting with dimensions in millimeters. The overall length of the fitting is 95-275. The height of the fitting is 150-230. The width of the fitting is 80. The distance from the center of the fitting to the center of the pipe is 70-220. The diameter of the pipe is D. The fitting is labeled with 'HAAS' and '90°'.



**G = 1 1/2"**