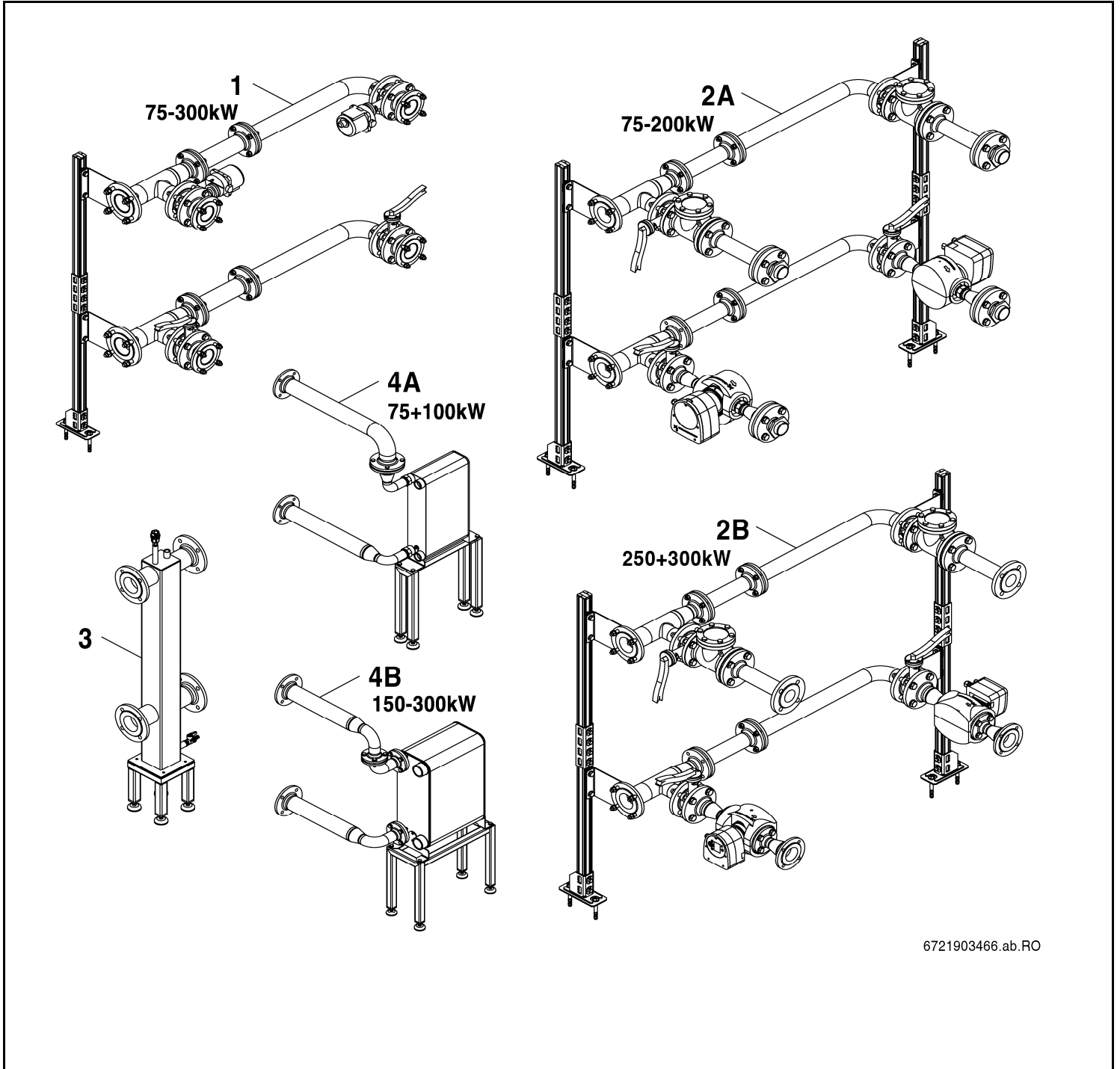
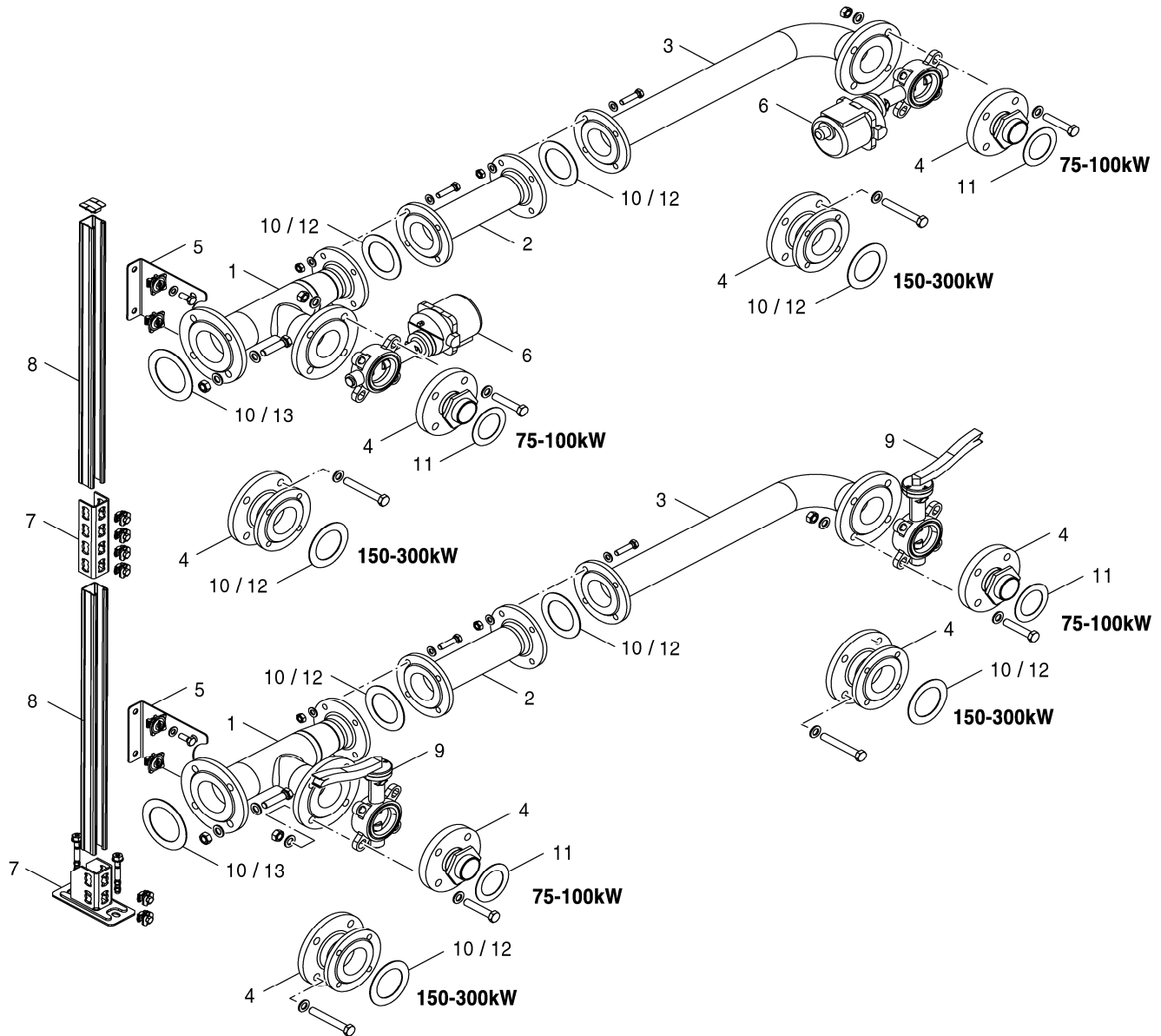


Kaskaden-Set 75/100/150/200/250/300



6721903466.ab.RO



Pos. 11 7736603878 < 06/2019 Dichtung 60x78x2 mm 2"
Pos. 11 7736603889 > 05/2019 O-Ring 66,27x3,53 mm

6721903468.ab.RO

Kaskaden-Set 75/100/150/200/250/300

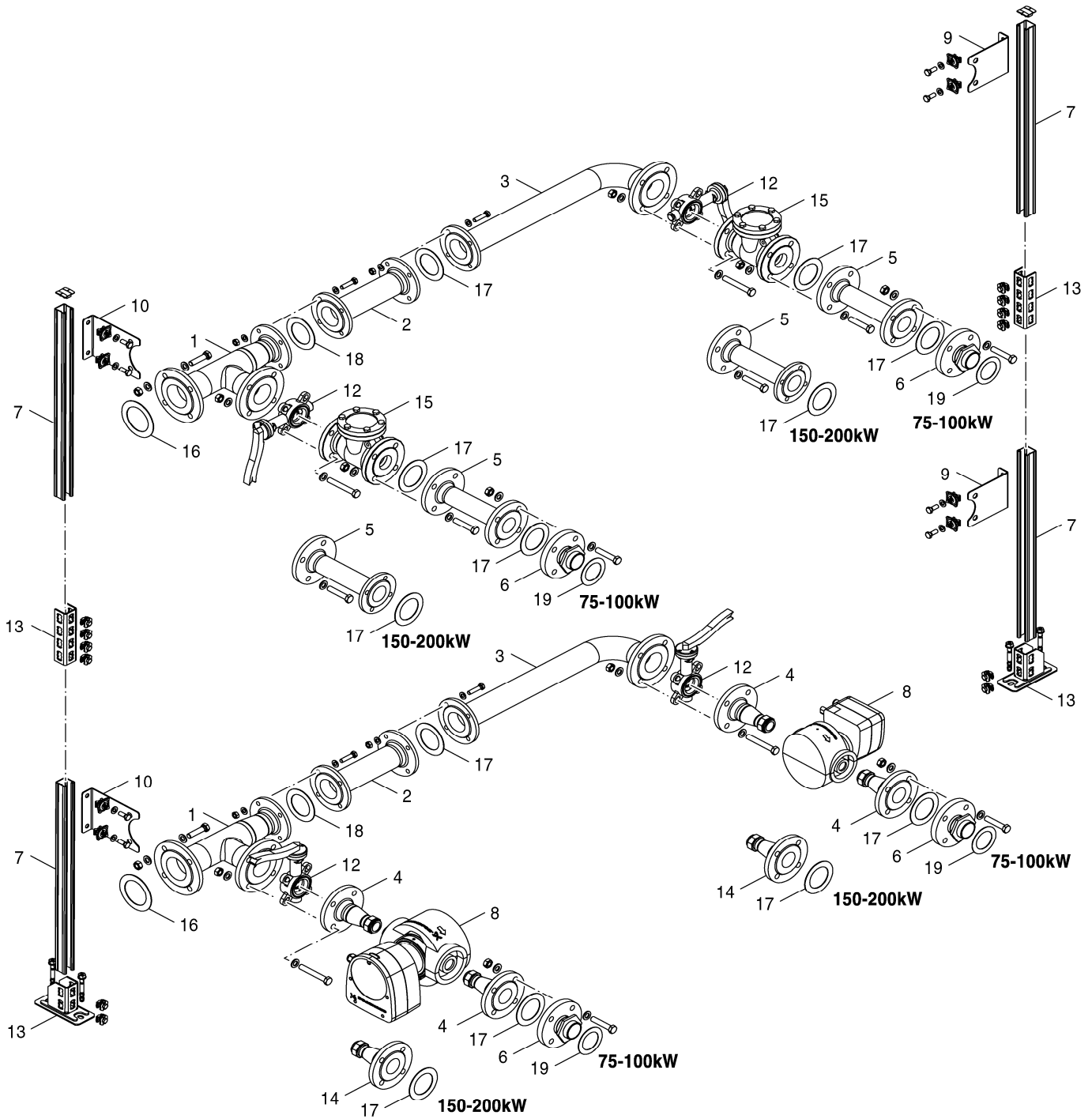
Kaskade KB372 75/100kW ohne Pumpe
Cascade KB372 75/100kW without pump
Cascade KB372 75/100kW sans pompe
Cascade KB372 75/100kW senza pompa
Cascade KB372 75/100kW zonder pomp
Cascada KB372 75/100kW sin bomba

1

Ersatzteilliste
Spare parts list

Liste des pièces de rechange
Lista parti di ricambio

Onderdelenlijst
Lista de repuestos



Pos. 19 7736603878 < 06/2019 Dichtung 60x78x2 mm 2"

Pos. 19 7736603889 > 05/2019 O-Ring 66,27x3,53 mm

6721903469.ab.RO

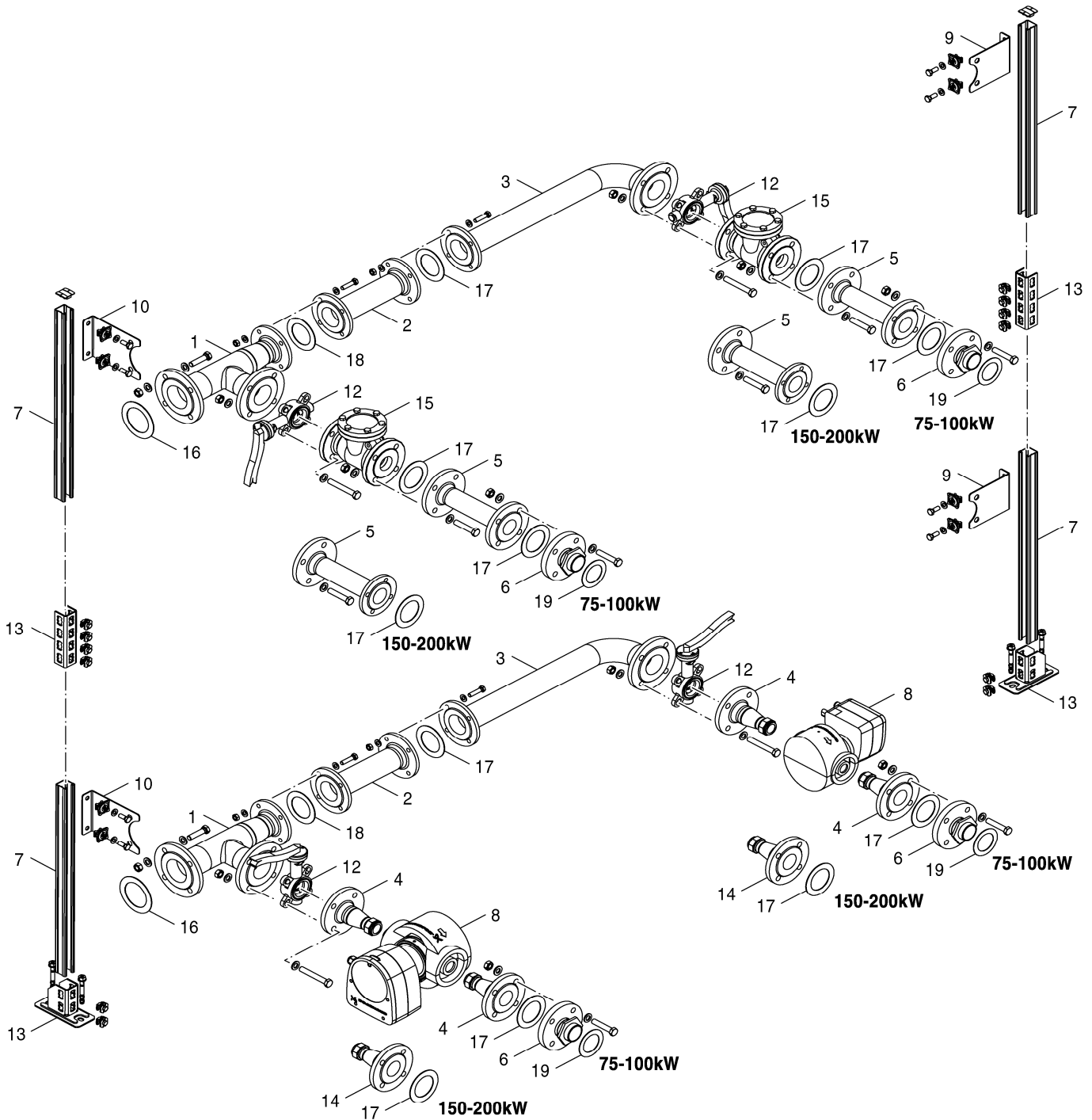
Kaskaden-Set 75/100/150/200/250/300

- 2** KB372 Verrohrung 75 - 200kW mit Pumpe
A KB372 Piping 75 - 200kW with pump
 KB372 Tuyauterie 75 - 200kW avec pompe
 KB372 Piping 75 - 200kW con pompa
 KB372 Piping 75 - 200kW met pomp
 KB372 Tubería 75 - 200kW con bomba

Ersatzteilliste
Spare parts list

Liste des pièces de rechange
Lista parti di ricambio

Onderdelenlijst
Lista de repuestos



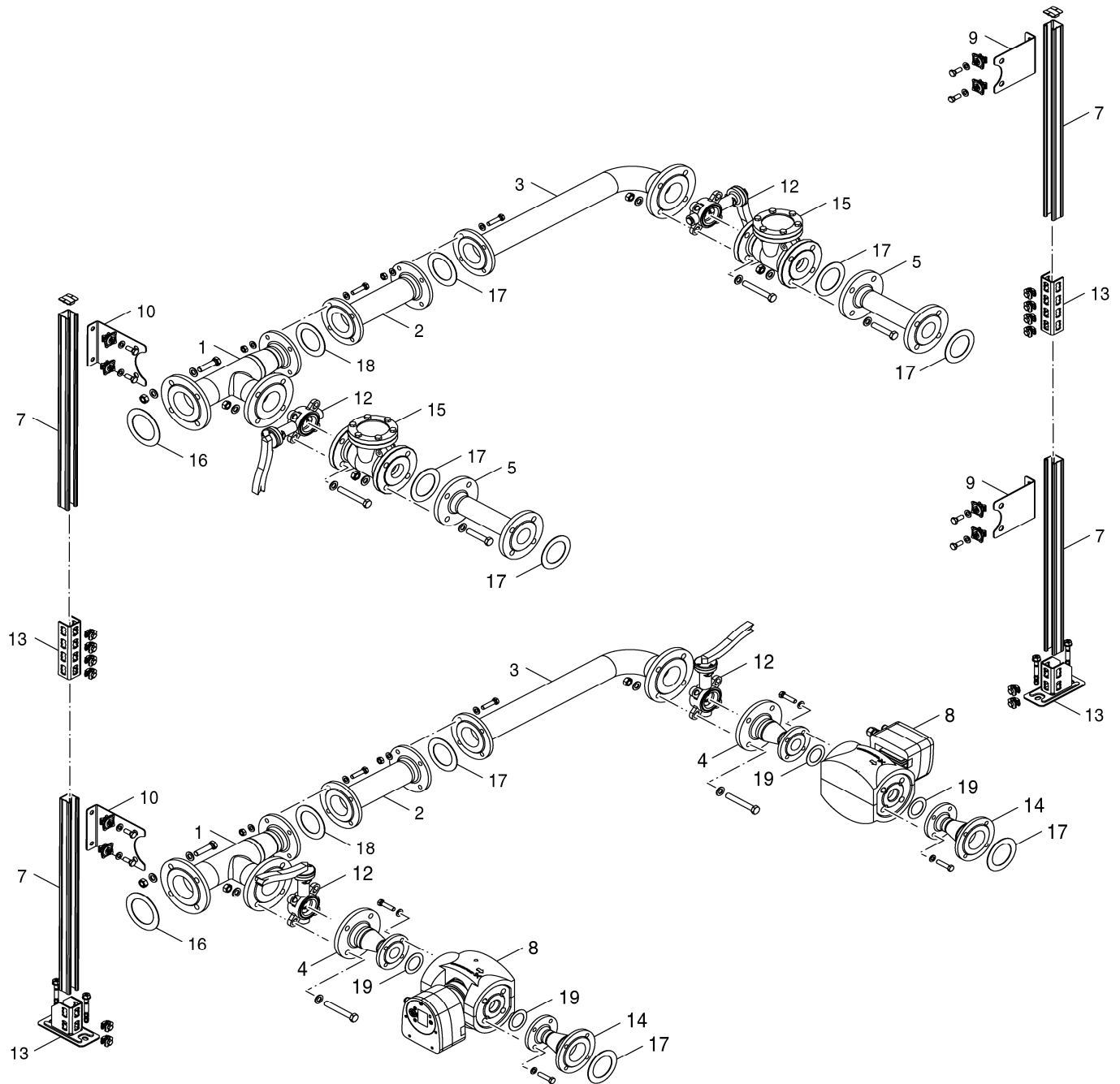
Pos. 19 7736603878 < 06/2019 Dichtung 60x78x2 mm 2"

Pos. 19 7736603889 > 05/2019 O-Ring 66,27x3,53 mm

6721903469.ab.RO

2 KB372 Verrohrung 75 - 200kW mit Pumpe
A KB372 Piping 75 - 200kW with pump
 KB372 Tuyauterie 75 - 200kW avec pompe
 KB372 Piping 75 - 200kW con pompa
 KB372 Piping 75 - 200kW met pomp
 KB372 Tubería 75 - 200kW con bomba

Kaskaden-Set 75/100/150/200/250/300

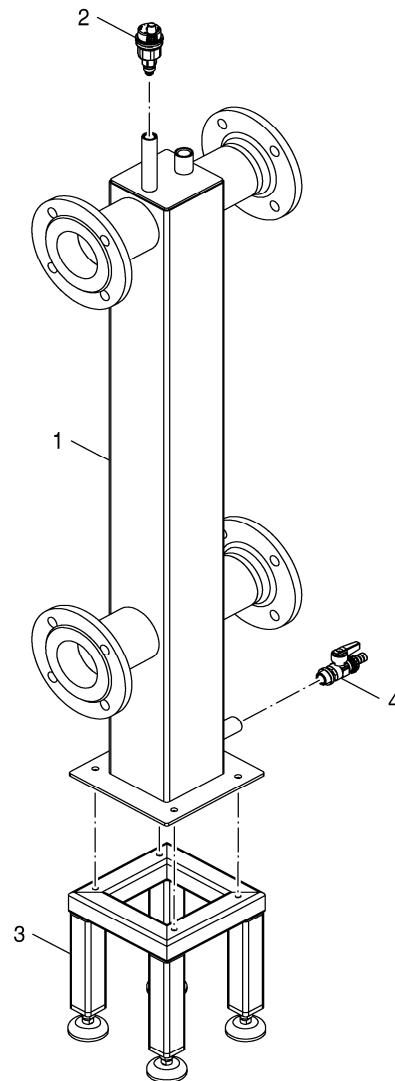


6721903470.ab.RO

2
B

KB372 Kaskade 250 - 300kW mit Pumpe
KB372 Cascade 250 - 300kW with pump
KB372 Cascade 250 - 300kW avec pompe
KB372 Cascade 250 - 300kW con pompa
KB372 Cascade 250 - 300kW met pomp
KB372 Cascade 250 - 300kW con bomba

Kaskaden-Set 75/100/150/200/250/300

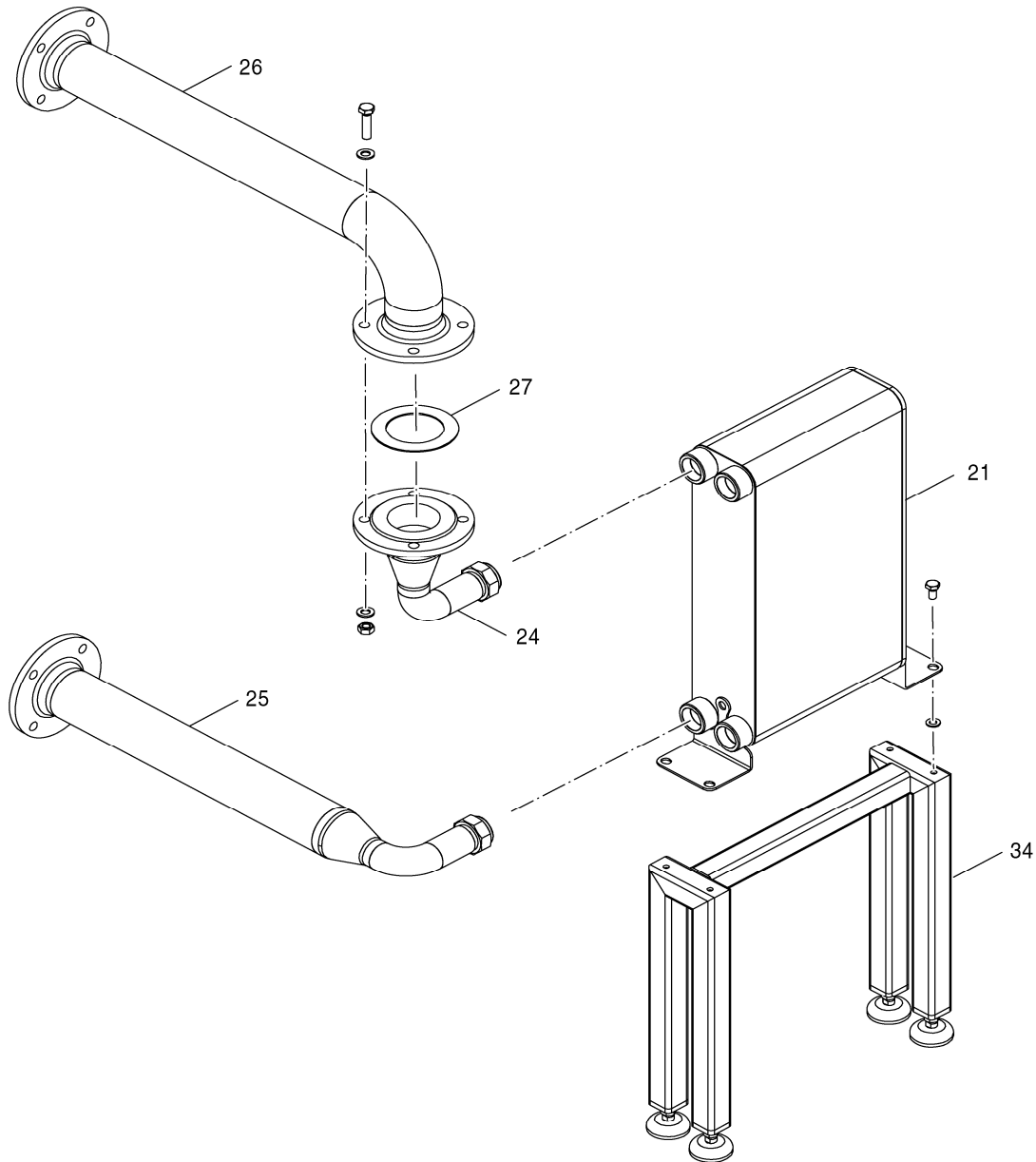


6721903454.aa.RO

3

Weichen-Set Kaskade KB372
Turnout Set Cascade KB372
Kit de participation Cascade KB372
Turnout Set Cascade KB372
Opkomst Cascade instellen KB372
Conjunto de asistencia Cascade KB372

Kaskaden-Set 75/100/150/200/250/300



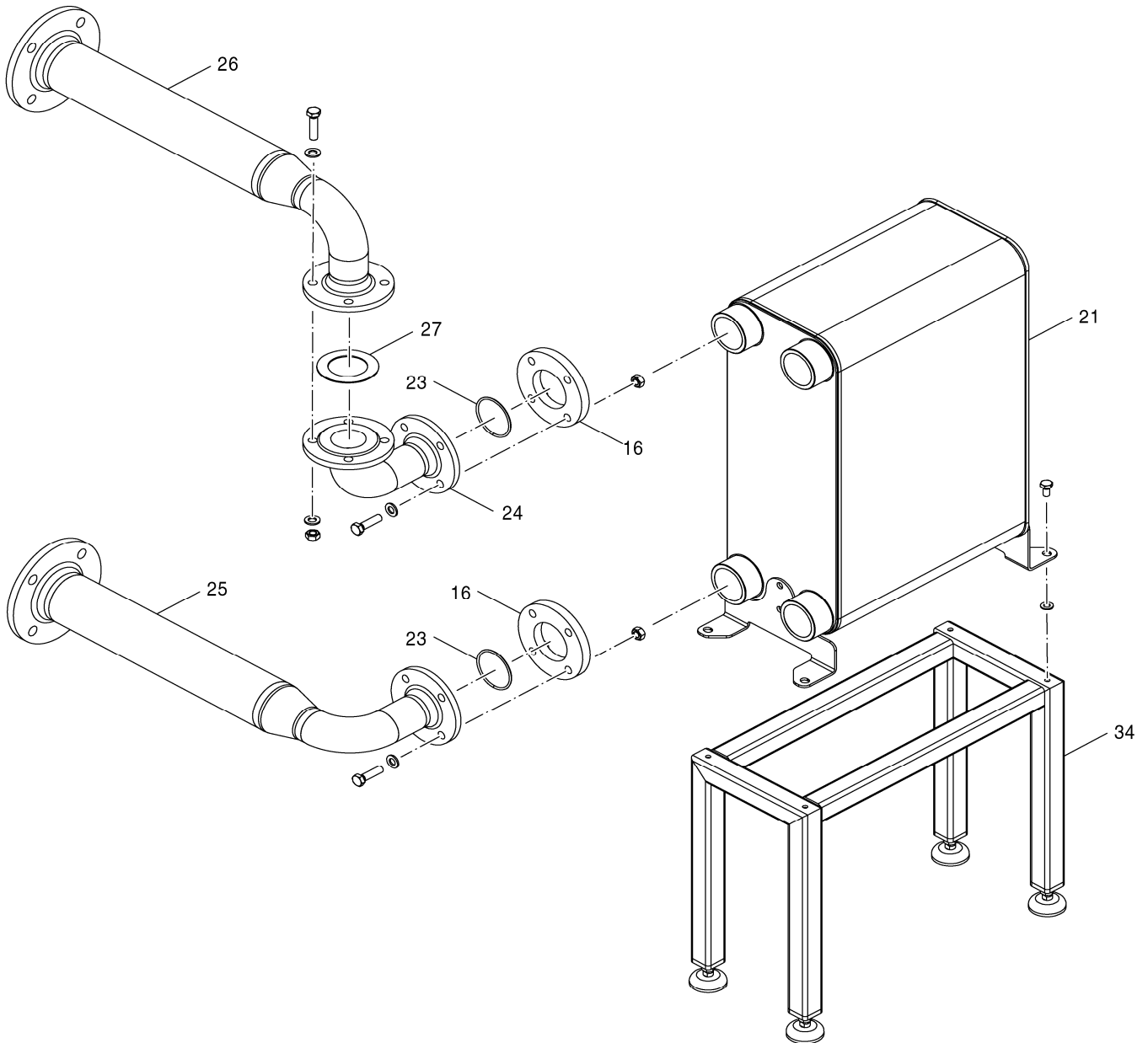
6721904157.aa.RO

4

Kaskade Systemtrennung Verschraubung
Cascade system separation connection
Séparation du système en cascade Raccord
Separazione del sistema cascata Serraggi
Cascade-systeemscheiding Schroefkoppelin
Separación del sistema cascada Unión ros

Kaskaden-Set 75/100/150/200/250/300

A



6721903473.aa.RO

4
B

Kaskade Systemtrennung Flansch
Cascade system separation flange
Séparation du système en cascade Bride
Separazione del sistema in cascata Flang
Cascade-systeemscheiding Flens
Separación del sistema cascada Brida

Kaskaden-Set 75/100/150/200/250/300

Übersetzungsliste List of translations		Liste des traductions Traduzione delle descrizioni		Vertalinglijst Lista de traducciones	
Pos	Description	Denomination	Descrizione	Benaming	Descripción
1	Element of construction	Groupe de construction	Gruppo di costruzione	Montagegroep	Grupo de construcción
1	pipe customer to ASK int1	Pipe client to ASK int.1	Convogliare il cliente su ASK int.1	Leid ook een klant ASK int.1	Tubo cliente para ASK int.1
1	Pipe customer to ASK int6	Pipe client to ASK int.6	Convogliare il cliente su ASK int.6	Leid klant naar ASK int.6	Tubo cliente a ASK int.6
2	Pipe customer to ASK int2	Pipe client to ASK int.2	Convogliare il cliente su ASK int.2	Leid ook een klant ASK int 2	Tubo cliente para ASK int.2
2	Pipe customer to ASK int5	Pipe client to ASK int.5	Convogliare il cliente su ASK int.5	Leid klant naar ASK int.5	Tubo cliente a ASK int.5
3	Pipe customer to ASK int3	Pipe client to ASK int.3	Convogliare il cliente su ASK int.3	Leid ook een klant ASK int 3	Tubo cliente para ASK int.3
3	Pipe customer to ASK int4	Pipe client to ASK int.4	Convogliare il cliente su ASK int.4	Leid de klant naar ASK int.4	Tubo cliente a ASK int.4
4	Pipe ANS Boiler KAS 150KW int	Tube ANS chaudi#re KAS 150kW int	Tubo ANS caldaia KAS 150kW int	Buis ANS ketel KAS 150kW int	Tubo ANS caldera KAS 150kW int
4	Pipe ANS Boiler KAS 200-300KW int	Tube ANS chaudi#re KAS 200-300KW int	Tubo ANS caldaia KAS 200-300KW int	Buis ANS ketel KAS 200-300KW int	Tubo ANS caldera KAS 200-300KW int
4	pipe ANS Boiler KAS 75-100KW int	Tuyau chaudi#re ANS KAS 75-100KW int	Caldaia ANS a tubi KAS 75-100KW int	Pijp ANS ketel KAS 75-100KW int	Tubo ANS caldera KAS 75-100KW int
5	Holder KAS-Piping DN65-PN6	Support KAS-connection DN65-PN6	Supporto KAS-connection DN65-PN6	Steen KAS-Leidingen DN65-PN6	Soporte KAS-connection DN65-PN6
5	Holder KAS-Piping DN80-PN6	Support KAS-connection DN80-PN6	Supporto KAS-connection DN80-PN6	Steen KAS-Leidingen DN80-PN6	Soporte KAS-connection DN80-PN6
6	Actuator ARI 220V DN32-DN80	Actuateur ARI 220V DN32-DN80	Attuatore ARI 220V DN32-DN80	Stelaandrijving ARI 220V DN32-DN80	Actuador ARI 220V DN32-DN80
7	Mountingset Hilti	Montage-Set Hilti	Installazione-Set Hilti	Montage-set Hilti	Montaje-Set Hilti
8	Mounting rail MQ-41 750mm	Rail Hilti 750mm	Rotaia Hilti 750mm	Rail Hilti 750mm	Rail Hilti 750mm
9	ASK DN65 PN6/10/16 ARI-ZESA	ASK DN65 PN6/10/16 ARI-ZESA	ASK DN65 PN6/10/16 ARI-ZESA	ASK DN65 PN6/10/16 ARI-ZESA	ASK DN65 PN6/10/16 ARI-ZESA
9	ASK DN50 PN16 EPDM ARI-ZESA	ASK DN50 PN16 EPDM ARI-ZESA	ASK DN50 PN16 EPDM ARI-ZESA	ASK DN50 PN16 EPDM ARI-ZESA	ASK DN50 PN16 EPDM ARI-ZESA
10	Gasket 77x116x2mm	Joint 77x116x2mm	Quarnizione 77x116x2mm	Pakking 77x116x2mm	Junta 77x116x2mm
11	Gasket 60x78x2mm 2"	Joint 60x78x2mm2"	Guarnizione 60x78x2mm2"	Pakking 60x78x2mm2"	Junta 60x78x2mm2"
11	O-Ring 66,27x3,53mm	Joint torique 66,27x3,53mm	O-ring 66,27x3,53mm	O-ring 66,27x3,53mm	Anillo tórico 66,27x3,53mm
12	Gasket 61x95x2mm	Joint 61x95x2mm	Guarnizione 61x95x2mm	Pakking 61x95x2mm	Junta 61x95x2mm
13	Gasket 90x132x2mm	Joint 90x132x2mm	Guarnizione 90x132x2mm	Pakking 90x132x2mm	Junta 90x132x2mm
	Insulation cascading set (2x75/100kW)	Isolation kit cascade (2x75/100kW)	Isolamento cascata set (2x75/100kW)	Isolatie cascade set (2x75-100kW)	Aislamiento kit sin bomba (2x75/100kW)
	Insulation cascading set 2x 200-2x300kW	Isolation kit cascade 2x200-300kW	Isolamento cascata set 2x200-300kW	Isolatie cascade set (2x200-300kW)	Aislamiento kit sin bomba 2x200-300kW
	Cascade set DN50/65 (2x75-100kW)	Kit cascade s/ pompe DN50/65 2x75/100kW	Isolamento cascata set DN 50/65 2x75/100	Cascade set DN50/65 (2x75-100kW)	Kit cascada sin bomba DN50/65 (2x75/100)
	Cascade DN50/65 (2x150kW)	Kit cascade s/ pompe DN50/65 2x150kW	Isolamento cascata set DN50/65 (2x150kW)	Cascade set DN50/65 (2x150kW)	Kit cascada sin bomba DN 50/65 2x150kW
	Cascade DN65/80- (2x 200 - 300kW)	Kit cascade s/ pompe DN65/80 2x200/300kW	Isolamento cascata set DN65/80 2x200/300	Cascade set DN65/80 (2x 200-300kW)	Kit cascada sin bomba DN 65/80 2x200/300
	Insulation cascading set 2x150 kW	Isolation kit cascade 2x150kW	Isolamento cascata set 2x150kW	Isolatie cascade set 2x150kW	Aislamiento kit sin bomba 2x150kW
	Screw hex. Head ISO4014 M16x110 8.8 A3K	Vis ISO 4014 M16x110 VZ	Vite ISO 4014 M16x110 VZ	Schroef ISO 4014 M16x110 VZ	Tornillo ISO M16x110 VZ
	Screw hex. Head ISO4017 M12x30 8.8 A3K	Vis ISO 4017 M12x30 VZ	Vite ISO 4017 M12x30 VZ	Schroef ISO 4017 M12x30 VZ	Tornillo ISO 4017 M12x30 VZ
	Screw hex. Head ISO4017 M16x65 8.8 A3K	Vis ISO 4017 M16x65 VZ	Vite ISO 4017 M16x65 VZ	Schroef ISO 4017 M16x65 VZ	Tornillo ISO 4017 M16x65 VZ
	Screw hex. Head ISO4017 M12x50 8.8 A3K	Vis ISO 4017 M12x50 VZ	Vite ISO 4017 M12x50 VZ	Schroef ISO 4017 M12x50 VZ	Tornillo ISO 4017 M12x50 VZ
	Washer ISO 7089 A17 A3K (2x)	Rondelle ISO 7089 A17 A3K (2x)	Rondella ISO 7089 A17 A3K (2x)	Ring ISO 7089 A17 A3K (2x)	Arandela ISO 7089 A17 A3K (2x)
	Screw ISO4017 M12x55 8.8 (2x)	Vis ISO4017 M12x55 8.8 (2x)	Vite ISO4017 M12x55 8.8 (2x)	Schroef ISO4017 M12x55 8.8 (2x)	Tornillo ISO4017 M12x55 8.8 (2x)
	Disc ISO 7089-A13-A3K (5x)	Rondelle ISO 7089-A13-A3K (5x)	Rondella ISO 7089-A13-A3K (5x)	Ring ISO 7089-A13-A3K (5x)	Arandela ISO 7089-A13-A3K (5x)
	Nut ISO4032 M16 8 A3K (2x)	Écrou ISO4032 M16 8 A3K (2x)	Dado ISO4032 M16 8 A3K (2x)	Moer ISO4032 M16 8 A3K (2x)	Tuerca ISO4032 M16 8 A3K (2x)
	Nut hex ISO4032 M12 8 A3K (4 pc)	Écrou SO4032 M12 8 A3K (4x)	Dado SO4032 M12 8 A3K (4x)	Moer SO4032 M12 8 A3K (4x)	Tuerca SO4032 M12 8 A3K (4x)
2A	Element of construction	Groupe de construction	Gruppo di costruzione	Montagegroep	Grupo de construcción
1	pipe customer to ASK int1	Pipe client to ASK int.1	Convogliare il cliente su ASK int.1	Leid ook een klant ASK int.1	Tubo cliente para ASK int.1
1	Pipe customer to ASK int6	Pipe client to ASK int.6	Convogliare il cliente su ASK int.6	Leid klant naar ASK int.6	Tubo cliente a ASK int.6
2	Pipe customer to ASK int2	Pipe client to ASK int.2	Convogliare il cliente su ASK int.2	Leid ook een klant ASK int 2	Tubo cliente para ASK int.2
2	Pipe customer to ASK int5	Pipe client to ASK int.5	Convogliare il cliente su ASK int.5	Leid klant naar ASK int.5	Tubo cliente a ASK int.5
3	Pipe customer to ASK int3	Pipe client to ASK int.3	Convogliare il cliente su ASK int.3	Leid ook een klant ASK int 3	Tubo cliente para ASK int.3
3	Pipe customer to ASK int4	Pipe client to ASK int.4	Convogliare il cliente su ASK int.4	Leid de klant naar ASK int.4	Tubo cliente a ASK int.4
4	Pipe pump DN50/PN16/G1 1/2"	Connexion pompe DN50 / PN16 / G1 1/2 "	Collegamento pompa DN50 / PN16 / G1 1/2	Verbindingspomp DN50 / PN16 / G1 1/2 "	Bomba de conexión DN50 / PN16 / G1 1/2 "
4	Pipe pump DN65/PN16/G1 1/2"	Connexion pompe DN65/PN16/G1 1/2"	Collegamento pompa DN65/PN16/G1 1/2"	Verbindingspomp DN65/PN16/G1 1/2"	Bomba de conexión DN65/PN16/G1 1/2"
5	Pipe customer to RSK int1	Chaudi#re de tuyaux # RSK int.1	Caldaia del tubo a RSK int.1	Buisketel naar RSK int.1	Tubo ANS caldera KAS 75-100KW int
5	pipe customer to RSK int2	Chaudi#re de tuyaux # RSK int.2	Riscaldare la caldaia a RSK int. 2	Buisketel naar RSK int.2	Tubo caldera RSK int.2
5	pipe customer to RSK int3	Chaudi#re de tuyaux # RSK int.3	Caldaia per tubi a RSK int.3 p	Buisketel naar RSK int.3	Caldera de tubería para RSK int.3
6	pipe ANS Boiler KAS 75-100KW int	Tuyau chaudi#re ANS KAS 75-100KW int	Caldaia ANS a tubi KAS 75-100KW int	Pijp ANS ketel KAS 75-100KW int	Tubo ANS caldera KAS 75-100KW int
7	Mounting rail MQ-41 750mm	Rail Hilti 750mm	Rotaia Hilti 750mm	Rail Hilti 750mm	Rail Hilti 750mm
8	Pump Magna3 25-40 180 230V	Pompe Magna 25-40 180 230V	Pompa Magna 25-40 180 230V	Pomp Magna3 25-40 180 230V	Bomba Magna 25-40 180 230V
8	Pump Magna3 25-60 180 230V	Pompe Magna 25-60 180 230V	Pompa Magna 25-60 180 230V	Pomp Magna3 25-60 180 230V	Bomba Magna 25-60 180 230V
8	Pump Magna3 25-80 180 230V	Pompe Magna 25-80 180 230V	Pompa Magna 25-80 180 230V	Pomp Magna3 25-80 180 230V	Bomba Magna 25-80 180 230V
8	Pump Magna3 25-100 180 230V	Pompe Magna 25-100 180 230V	Pompa Magna 25-100 180 230V	Pomp Magna3 25-100 180 230V	Bomba Magna 25-100 180 230V
9	Holder KAS-piping DN50-PN16	Support KAS-connection DN50-PN16	Supporto KAS-connection DN50-PN16	Steen KAS-Leidingen DN50-PN16	Soporte KAS-connection DN50-PN16
9	Holder KAS-Piping DN65-PN16	Support Tuyauterie KAS DN65-PN16	Supporto Tubazioni KAS DN65-PN16	Steen KAS-leidingen DN65-PN16	Soporte Tubería KAS DN65-PN16

Übersetzungsliste List of translations		Liste des traductions Traduzione delle descrizioni		Vertalinglijst Lista de traducciones	
Pos	Description	Denomination	Descrizione	Benaming	Descripción
10	Holder KAS-Piping DN65-PN6	Support KAS-connection DN65-PN6	Supporto KAS-connection DN65-PN6	Steen KAS-Leidingen DN65-PN6	Soporte KAS-connection DN65-PN6
10	Holder KAS-Piping DN80-PN6	Support KAS-connection DN80-PN6	Supporto KAS-connection DN80-PN6	Steen KAS-Leidingen DN80-PN6	Soporte KAS-connection DN80-PN6
12	ASK DN65 PN6/10/16 ARI-ZESA	ASK DN65 PN6/10/16 ARI-ZESA	ASK DN65 PN6/10/16 ARI-ZESA	ASK DN65 PN6/10/16 ARI-ZESA	ASK DN65 PN6/10/16 ARI-ZESA
12	ASK DN50 PN16 EPDM ARI-ZESA	ASK DN50 PN16 EPDM ARI-ZESA	ASK DN50 PN16 EPDM ARI-ZESA	ASK DN50 PN16 EPDM ARI-ZESA	ASK DN50 PN16 EPDM ARI-ZESA
13	Mountingset Hilti	Montage-Set Hilti	Installazione-Set Hilti	Montage-set Hilti	Montaje-Set Hilti
14	Pipe pump DN50/PN6/G1 1/2"	Connexion pompe DN50 / PN6 / G1 1/2 "	Collegamento pompa DN50 / PN6 / G1 1/2 "	Verbindingspomp DN50 / PN6 / G1 1/2 "	Bomba de conexión DN50/PN6/G1 1/2"
14	Connection pump DN65/PN6/G1 1/2"	Connexion pompe DN65 / PN6 / G1 1/2 "	Collegamento pompa DN65 / PN6 / G1 1/2 "	Aansluiting pomp DN65/PN6/G1 1/2"	Bomba de conexión DN65 / PN6 / G1 1/2 "
15	OV non-ret.flapPN16GGDN50 fl.e DIN 2501	Clapet anti-retour DN50 PN16	Valvola di ritegno a clapet DN50 PN16	Terugslagklep DN50 PN16	Antirretorno DN50 PN16
15	OV non-ret.flapPN16GGDN65 fl.e DIN 2501	Clapet anti-retour DN65 PN16	Valvola di ritegno a clapet DN65 PN16	Terugslagklep DN65 PN16	Antirretorno DN65 PN16
16	Gasket 77x116x2mm	Joint 77x116x2mm	Guarnizione 77x116x2mm	Pakking 77x116x2mm	Junta 77x116x2mm
16	Gasket 90x132x2mm	Joint 90x132x2mm	Guarnizione 90x132x2mm	Pakking 90x132x2mm	Junta 90x132x2mm
17	Gasket 61x95x2mm	Joint 61x95x2mm	Guarnizione 61x95x2mm	Pakking 61x95x2mm	Junta 61x95x2mm
17	Gasket 77x116x2mm	Joint 77x116x2mm	Guarnizione 77x116x2mm	Pakking 77x116x2mm	Junta 77x116x2mm
18	Gasket 61x107x2mm	Joint 61x107x2mm	Guarnizione 61x107x2mm	Pakking 61x107x2mm	Junta 61x107x2mm
18	Gasket 77x127x2mm	Joint 77x127x2mm	Guarnizione 77x127x2mm	Pakking 77x127x2mm	Junta 77x127x2mm
19	Gasket 60x78x2mm 2"	Joint 60x78x2mm 2"	Guarnizione 60x78x2mm 2"	Pakking 60x78x2mm 2"	Junta 60x78x2mm 2"
19	Gasket 49x85x2mm	Joint 49x85x2mm	Guarnizione 49x85x2mm	Pakking 49x85x2mm	Junta 49x85x2mm
19	O-Ring 66,27x3,53mm	Joint torique 66,27x3,53mm	O-ring 66,27x3,53mm	O-ring 66,27x3,53mm	Anillo tórico 66,27x3,53mm
	Cascading set DN 50/65 2x75kW w/ pump	Kit cascade avec pompe DN50/65 2x75kW	Set cascata DN50/65 2x75kW con pompa	Cascade set DN50/65 - met pomp (2x 75kW)	Cascada DN50/65 (2x75kW) con bomba
	Cascade Set DN50/65 - Pump (2x 100kW)	Kit cascade avec pompe DN50/65 2x100kW	Set cascata DN50/65 2x100kW con pompa	Cascade set DN50/65 - met pomp (2x100kW)	Cascada DN50/65 (2x100kW) con bomba
	Cascade Set DN50/65 - Pump (2x 150kW)	Kit cascade avec pompe DN50/65 2x150kW	Set cascata DN50/65 2x150kW con pompa	Cascade set DN50/65 - met pomp (2x150kW)	Cascada DN50/65 (2x150kW) con bomba
	Cascade Set DN65/80 - Pump (2x 200kW)	Kit cascade avec pompe DN65/80 2x200kW	Set cascata DN65/80 2x200kW con pompa	Cascade set DN65/80 - met pomp (2x200kW)	Cascada DN65/80 (2x200kW) con bomba
	Insulation casc. set 2x75+100kW pump	Isolation kit cascade pompe 2x75/100kW	Isolamento cascata con pompa 2x75_100kW	Isolatie casc. set met pomp (2x75-100kW)	Aislamiento kit con bomba 2x75/100kW
	Insulation casca. set 2x200kW pump	Isolation kit cascade pompe 2x200kW	Isolamento set cascata con pompa 2x200kW	Isolatie cascade set + pomp (2x200kW)	Aislamiento kit con bomba 2x200kW
	Insulation casca. set 2x150kW pump	Isolation kit cascade pompe 2x150kW	Isolamento set cascata con pompa 2x150kW	Isolatie casc. set - met pomp (2x150kW)	Aislamiento kit con bomba 2x150kW
	Screw hex. Head ISO4014 M16x110 8.8 A3K	Vis ISO 4014 M16x110 VZ	Vite ISO 4014 M16x110 VZ	Schroef ISO 4014 M16x110 VZ	Tornillo ISO M16x110 VZ
	Screw hex. Head ISO4017 M12x30 8.8 A3K	Vis ISO 4017 M12x30 VZ	Vite ISO 4017 M12x30 VZ	Schroef ISO 4017 M12x30 VZ	Tornillo ISO 4017 M12x30 VZ
	Screw hex. Head ISO4017 M16x65 8.8 A3K	Vis ISO 4017 M16x65 VZ	Vite ISO 4017 M16x65 VZ	Schroef ISO 4017 M16x65 VZ	Tornillo ISO 4017 M16x65 VZ
	Screw hex. Head ISO4017 M16x70 8.8 A3K	Vis ISO 4017 M16x70 VZ	Vite ISO 4017 M16x70 VZ	Schroef ISO 4017 M16x70 VZ	Tornillo ISO 4017 M16x70 VZ
	Screw hex. Head ISO4017 M12x50 8.8 A3K	Vis ISO 4017 M12x50 VZ	Vite ISO 4017 M12x50 VZ	Schroef ISO 4017 M12x50 VZ	Tornillo ISO 4017 M12x50 VZ
	Washer ISO 7089 A17 A3K (2x)	Rondelle ISO 7089 A17 A3K (2x)	Rondella ISO 7089 A17 A3K (2x)	Ring ISO 7089 A17 A3K (2x)	Arandela ISO 7089 A17 A3K (2x)
	Screw ISO4017 M12x55 8.8 (2x)	Vis ISO4017 M12x55 8.8 (2x)	Vite ISO4017 M12x55 8.8 (2x)	Schroef ISO4017 M12x55 8.8 (2x)	Tornillo ISO4017 M12x55 8.8 (2x)
	Disc ISO 7089-A13-A3K (5x)	Rondelle ISO 7089-A13-A3K (5x)	Rondella ISO 7089-A13-A3K (5x)	Ring ISO 7089-A13-A3K (5x)	Arandela ISO 7089-A13-A3K (5x)
	Nut ISO4032 M16 8 A3K (2x)	Écrou ISO4032 M16 8 A3K (2x)	Dado ISO4032 M16 8 A3K (2x)	Moer ISO4032 M16 8 A3K (2x)	Tuerca ISO4032 M16 8 A3K (2x)
	Nut hex ISO4032 M12 8 A3K (4 pc)	Écrou SO4032 M12 8 A3K (4x)	Dado SO4032 M12 8 A3K (4x)	Moer SO4032 M12 8 A3K (4x)	Tuerca SO4032 M12 8 A3K (4x)
2B	Element of construction	Groupe de construction	Gruppo di costruzione	Montagegroep	Grupo de construcción
1	Pipe customer to ASK int6	Pipe client to ASK int.6	Convogliare il cliente su ASK int.6	Leid klant naar ASK int.6	Tubo cliente a ASK int.6
2	Pipe customer to ASK int5	Pipe client to ASK int.5	Convogliare il cliente su ASK int.5	Leid klant naar ASK int.5	Tubo cliente a ASK int.5
3	Pipe customer to ASK int4	Pipe client to ASK int.4	Convogliare il cliente su ASK int.4	Leid de klant naar ASK int.4	Tubo cliente a ASK int.4
4	Pipe pump DN65 PN16-DN40 PN6	Connexion pompe DN65 PN16-DN40 PN6	Collegamento pompa DN65 PN16-DN40 PN6	Verbindingspomp DN65 PN16-DN40 PN6	Bomba de conexión DN65 PN16-DN40 PN6
5	Pipe customer to ASK int4	Pipe client to RSK int.4	Conduci il cliente a RSK int.4	Leid klant naar RSK int.4	Cliente de tuberías a RSK int.4
7	Mounting rail MQ-41 750mm	Rail Hilti 750mm	Rotaia Hilti 750mm	Rail Hilti 750mm	Rail Hilti 750mm
8	Pump Magna3 40-60 F 220 230V	Pompe Magna 40-60 F 180 230V	Pompa Magna 40-60 F-100 180 230V	Pomp Magna3 40-60 F 180 230V	Bomba Magna 40-60 F 180 230V
8	Pump Magna3 40-80 F 230V	Pompe Magna 40-80 F 180 230V	Pompa Magna 40-80 F 180 230V	Pomp Magna3 40-80 F 180 230V	Bomba Magna 40-80 F 180 230V
9	Holder KAS-Piping DN65-PN16	Support Tuyauterie KAS DN65-PN16	Supporto Tubazioni KAS DN65-PN16	Steen KAS-leidingen DN65-PN16	Soporte Tubería KAS DN65-PN16
10	Holder KAS-Piping DN80-PN6	Support KAS-connection DN80-PN6	Supporto KAS-connection DN80-PN6	Steen KAS-Leidingen DN80-PN6	Soporte KAS-connection DN80-PN6
12	ASK DN65 PN6/10/16 ARI-ZESA	ASK DN65 PN6/10/16 ARI-ZESA	ASK DN65 PN6/10/16 ARI-ZESA	ASK DN65 PN6/10/16 ARI-ZESA	ASK DN65 PN6/10/16 ARI-ZESA
13	Mountingset Hilti	Montage-Set Hilti	Installazione-Set Hilti	Montage-set Hilti	Montaje-Set Hilti
14	Pipe pump DN65 PN6-DN40 PN6 int	Pompe # pipe DN65 PN6-DN40 PN6 int	Pompa per tubazioni DN65 PN6-DN40 PN6 in	Pijppomp DN65 PN16-DN40 PN6 int	Bomba de tubo DN65 PN6-DN40 PN6 int
15	OV non-ret.flapPN16GGDN65 fl.e DIN 2501	Clapet anti-retour DN65 PN16	Valvola di ritegno a clapet DN65 PN16	Terugslagklep DN65 PN16	Antirretorno DN65 PN16
16	Gasket 90x132x2mm	Joint 90x132x2mm	Guarnizione 90x132x2mm	Pakking 90x132x2mm	Junta 90x132x2mm
17	Gasket 77x116x2mm	Joint 77x116x2mm	Guarnizione 77x116x2mm	Pakking 77x116x2mm	Junta 77x116x2mm
18	Gasket 77x127x2mm	Joint 77x127x2mm	Guarnizione 77x127x2mm	Pakking 77x127x2mm	Junta 77x127x2mm
19	Gasket 49x85x2mm	Joint 49x85x2mm	Guarnizione 49x85x2mm	Pakking 49x85x2mm	Junta 49x85x2mm
	Cascade Set DN65/80 - Pump (2x 250kW)	Kit cascade avec pompe DN65/80 2x250kW	Set cascata DN65/80 2x250kW con pompa	Cascade set DN65/80 - met pomp (2x250kW)	Cascada DN65/80 (2x250kW) con bomba
	Cascade Set DN65/80 - Pump (2x 300kW)	Kit cascade avec pompe DN65/80 2x300kW	Set cascata DN65/80 2x300kW con pompa	Cascade set DN65/80 - met pomp (2x300kW)	Cascada DN65/80 (2x300kW) con bomba
	Insulation casca. set 2x250kW pump	Isolation kit cascade pompe 2x250kW	Isolamento set cascata con pompa 2x250kW	Isolatie casc. set - met pomp (2x250kW)	Aislamiento kit con bomba 2x250kW

Übersetzungsliste List of translations		Liste des traductions Traduzione delle descrizioni		Vertalinglijst Lista de traducciones	
Pos	Description	Denomination	Descrizione	Benaming	Descripción
	Insulation casca. set 2x300kW pump	Isolation kit cascade pompe 2x300kW	Isolamento set cascata con pompa 2x300kW	Isolatie casc. set - met pomp (2x300kW)	Aislamiento kit con bomba 2x300kW
	Screw hex. Head ISO4014 M16x110 8.8 A3K	Vis ISO 4014 M16x110 VZ	Vite ISO 4014 M16x110 VZ	Schroef ISO 4014 M16x110 VZ	Tornillo ISO M16x110 VZ
	Screw hex. Head ISO4017 M12x30 8.8 A3K	Vis ISO 4017 M12x30 VZ	Vite ISO 4017 M12x30 VZ	Schroef ISO 4017 M12x30 VZ	Tornillo ISO 4017 M12x30 VZ
	Screw hex. Head ISO4017 M16x65 8.8 A3K	Vis ISO 4017 M16x65 VZ	Vite ISO 4017 M16x65 VZ	Schroef ISO 4017 M16x65 VZ	Tornillo ISO 4017 M16x65 VZ
	Screw hex. Head ISO4017 M12x50 8.8 A3K	Vis ISO 4017 M12x50 VZ	Vite ISO 4017 M12x50 VZ	Schroef ISO 4017 M12x50 VZ	Tornillo ISO 4017 M12x50 VZ
	Washer ISO 7089 A17 A3K (2x)	Rondelle ISO 7089 A17 A3K (2x)	Rondella ISO 7089 A17 A3K (2x)	Ring ISO 7089 A17 A3K (2x)	Arandela ISO 7089 A17 A3K (2x)
	Screw ISO4017 M12x55 8.8 (2x)	Vis ISO4017 M12x55 8.8 (2x)	Vite ISO4017 M12x55 8.8 (2x)	Schroef ISO4017 M12x55 8.8 (2x)	Tornillo ISO4017 M12x55 8.8 (2x)
	Disc ISO 7089-A13-A3K (5x)	Rondelle ISO 7089-A13-A3K (5x)	Rondella ISO 7089-A13-A3K (5x)	Ring ISO 7089-A13-A3K (5x)	Arandela ISO 7089-A13-A3K (5x)
	Nut ISO4032 M16 8 A3K (2x)	Écrou ISO4032 M16 8 A3K (2x)	Dado ISO4032 M16 8 A3K (2x)	Moer ISO4032 M16 8 A3K (2x)	Tuerca ISO4032 M16 8 A3K (2x)
	Nut hex ISO4032 M12 8 A3K (4 pc)	Écrou SO4032 M12 8 A3K (4x)	Dado SO4032 M12 8 A3K (4x)	Moer SO4032 M12 8 A3K (4x)	Tuerca SO4032 M12 8 A3K (4x)
3	Element of construction	Groupe de construction	Gruppo di costruzione	Montagegroep	Grupo de construccion
1	HYW H 1135 DN65 int	HYW H 1135 DN65 int	HYW H 1135 DN65 int	HYW H 1135 DN65 int	HYW H 1135 DN65 int
1	HYW H 1140 DN65 int	HYW H 1140 DN65 int	HYW H 1140 DN65 int	HYW H 1140 DN65 int	HYW H 1140 DN65 int
1	HYW H 1142 DN80 int	HYW H 1142 DN80 int	HYW H 1142 DN80 int	HYW H 1142 DN80 int	HYW H 1142 DN80 int
2	Air vent valve 3/8" CALEFFI Robocal	Conduit 3/8"	Sfogo 3/8"	Luchten 3/8"	Respiradero 3/8"
3	Holder HYW 75-300kW	Support HYW 75-300kW	Supporto HYW 75-300kW	Steun HYW 75-300kW	Soporte HYW 75-300kW
4	Drain_cock R1/2	Robinet R1/2 Bekaert 048-250 embf	Rubin. KFE R1/2 Bekaert 048-250 imball.	Drain_cock R1/2	Llave de llenado y vaciado R1/2
	LLH (DN65 - 2x75-100kW)	Bout. découplage DN65 2x75/2x100kW	Compensatore idraulico LLH DN65-2x75_100	Open verdeler DN65 (2x75-100kW)	Compensador DN65 (2x75/100Kw)
	LLH (DN65 - 2x 150kW)	Bout. découplage DN65 2x150kW	Compensatore idraulico LLH DN65-2x150kW	Open verdeler DN65 (2x150kW)	Compensador DN65 (2x150kW)
	LLH (DN80- 2x 200-300kW)	Bout. découplage DN80 2x200-2x300kW	Compensatore idraulico LLH DN80-2x200-300	Open verdeler DN80 (2x200-300kW)	Compensador DN80 (2x200-300kW)
	Insulation LLH (DN65 - 2x75-100kW)	Isolation bout. découp DN65 2x75/2x100kW	Isolamento compensator LLH DN65-2x75-100	Isolatie open verd. (DN65 - 2x75-100kW)	Aislamiento compensador (2x75/100Kw)
	Insulation LLH (DN65 - 2x 150kW)	Isolation bout. découp DN65 2x150kW	Isolamento compensator LLH DN65-2x150kW	Isolatie open verdeler (DN65 - 2x150kW)	Aislamiento compensador (2x150kW)
	Insulation LLH (DN80- 2x 200-300kW)	Isolation bout découp DN80 2x200-2x300kW	Isolamento compensat LLH DN80-2x200-300	Isolatie open verd. (DN80 - 2x200-300kW)	Aislamiento compensador (2x 200-300kW)
	Tilt foot D58 M12X85	Sous l'équipement	Attrezzature Sotto M12x85	Apparatuur Under	Bajo equipos
	Screw hex. Head ISO4017 M10x20 8.8 A3K	Vis ISO 4017 M10x20 (4x)	Vite ISO 4017 M10x20 (4x)	Schroef ISO 4017 M10x20 (4x)	Tornillo ISO 4017 M10x20 (4x)
	Washer ISO 7089 10,5x2 (10x)	Rondelle plate ISO 7089 10,5x2 (10x)	Rondella ISO 7089 10,5x2 (10x)	Onderlegring ISO 7089 10,5x2 (10x)	Arandela ISO 7089 10,5x2 (10x)
4A	Element of construction	Groupe de construction	Gruppo di costruzione	Montagegroep	Grupo de construccion
21	PWT SL-BR44 120-TL	PWT SL-BR44 120-TL	PWT SL-BR44 120-TL	PWT SL-BR44 120-TL	PWT SL-BR44 120-TL
21	PWT SL140-BR30 50-TL	PWT SL140-BR30 50-TL	PWT SL140-BR30 50-TL	PWT SL140-BR30 50-TL	PWT SL140-BR30 50-TL
24	Pipe Boiler PWT int.1	Chaudière de tuyauterie en PWT int.1	Scaldare la caldaia a PWT int. 1 p	Buis boiler naar PWT int 1	Tubería de caldera a PWT int.1.
24	Pipe Boiler PWT int.3	Chaudière de tuyauterie en PWT int.3	Scaldare la caldaia a PWT int. 3 p	Buisketel naar PWT int 3	Tubería de caldera a PWT int.3.
25	Pipe PWT Boiler int.1	Tuyau PHE # chaudière int.1	Tubo PHE a caldaia int.1	Buizen PHE naar ketel int.1	Tubería PHE a caldera int.1
25	Pipe PWT Boiler int.2	Tuyau PHE # chaudière int.2	Tubo PHE a caldaia int.2	Buizen PHE naar ketel int.2	Tubería PHE a caldera int.2
26	Pipe Boiler PWT int.2	Chaudière de tuyauterie en PWT int.2	Scaldare la caldaia a PWT int. 2 p	Buis boiler naar PWT int 2	Tubería de caldera a PWT int.2.
27	Gasket 77x116x2mm	Joint 77x116x2mm	Quarnizione 77x116x2mm	Pakking 77x116x2mm	Junta 77x116x2mm
34	Holder PWT KAS 75KW int	Titulaire PWT KAS 75KW int	Supporto PWT KAS 75KW int	Steun PWT KAS 75KW int	Soporte PWT KAS 75KW int
34	Holder PWT KAS 100KW int	Titulaire PWT KAS 100KW int	Supporto PWT KAS 100KW int	Steun PWT KAS 100KW int	Soporte PWT KAS 100KW int
	PHE C/W Stand/Piping (DN65 - 2x 75kW)	Echangeur # plaques DN65 pour 2x75 kW	Scambiatore piastre PHE DN65-2x75 kW	Platenwisselaar DN65 voor 2x75kW	Intercambiador cascada (DN65 - 2x 75kW)
	PHE C/W Stand/Piping (DN65 - 2x 100kW)	Echangeur # plaques DN65 pour 2x100 kW	Scambiatore piastre PHE DN65-2x100kW	Platenwisselaar DN65 voor 2x100kW	Intercambiador cascada (DN65 - 2x 100kW)
	Insulation PHE C/W (DN65 - 2x75kW)	Isolant échangeur DN65 pour 2x75 kW	Isolamento scambiat piastre PHE 2x75kW	Isolatie platenwiss. DN65 voor 2x75kW	Aislamiento intercambiador (2x 75kW)
	Insulation PHE C/W (DN65 - 2x100kW)	Isolant échangeur DN65 pour 2x100 kW	Isolamento scambiat piastre PHE 2x100kW	Isolatie platenwiss. DN65 voor 2x100kW	Aislamiento intercambiador (2x 100kW)
	Tilt foot D58 M12X85	Sous l'équipement	Attrezzature Sotto M12x85	Apparatuur Under	Bajo equipos
	Screw hex. Head ISO4017 M12x50 8.8 A3K	Vis ISO 4017 M12x50 VZ	Vite ISO 4017 M12x50 VZ	Schroef ISO 4017 M12x50 VZ	Tornillo ISO 4017 M12x50 VZ
	Screw hex. Head ISO4017 M10x20 8.8 A3K	Vis ISO 4017 M10x20 (4x)	Vite ISO 4017 M10x20 (4x)	Schroef ISO 4017 M10x20 (4x)	Tornillo ISO 4017 M10x20 (4x)
	Disc ISO 7089-A13-A3K (5x)	Rondelle ISO 7089-A13-A3K (5x)	Rondella ISO 7089-A13-A3K (5x)	Ring ISO 7089-A13-A3K (5x)	Arandela ISO 7089-A13-A3K (5x)
	Nut hex ISO4032 M12 8 A3K (4 pc)	Écrou SO4032 M12 8 A3K (4x)	Dado SO4032 M12 8 A3K (4x)	Moer SO4032 M12 8 A3K (4x)	Tuerca SO4032 M12 8 A3K (4x)
4B	Element of construction	Groupe de construction	Gruppo di costruzione	Montagegroep	Grupo de construccion
16	Connector flange PWT 2-1/2"	Bride de raccordement PWT 2-1 / 2 "	Flangia di collegamento PWT 2-1 / 2 "	Verbindingsflens PWT 2-1 / 2 "	Brida de conexión PWT 2-1 / 2 "
21	PWT SL140-BR30 70-TL	PWT SL140-BR30 70-TL	PWT SL140-BR30 70-TL	PWT SL140-BR30 70-TL	PWT SL140-BR30 70-TL
21	PWT SL140-BR30-90-TL-LIQUID	PWT SL140-BR30-90-TL-LIQUID	PWT SL140-BR30-90-TL-LIQUID	PWT SL140-BR30-90-TL-LIQUID	PWT SL140-BR30-90-TL-LIQUID
21	PWT SL140-BR30-110-TL-LIQUID	PWT SL140-BR30-110-TL-LIQUID	PWT SL140-BR30-110-TL-LIQUID	PWT SL140-BR30-110-TL-LIQUID	PWT SL140-BR30-110-TL-LIQUID
21	PWT SL140-BR30-140-TL-LIQUID	PWT SL140-BR30-140-TL-LIQUID	PWT SL140-BR30-140-TL-LIQUID	PWT SL140-BR30-140-TL-LIQUID	PWT SL140-BR30-140-TL-LIQUID
23	O-Ring 66,27x3,53mm	Joint torique 66,27x3,53mm	O-ring 66,27x3,53mm	O-ring 66,27x3,53mm	Anillo tórico 66,27x3,53mm
24	Pipe Boiler PWT int.3	Chaudière de tuyauterie en PWT int.3	Scaldare la caldaia a PWT int. 3 p	Buisketel naar PWT int 3	Tubería de caldera a PWT int.3.
25	Pipe PWT Boiler int.2	Tuyau PHE # chaudière int.2	Tubo PHE a caldaia int.2	Buizen PHE naar ketel int.2	Tubería PHE a caldera int.2
25	Pipe PWT Boiler int.3	Tuyau PHE # chaudière int.3	Tubo PHE a caldaia int.3	Buizen PHE naar ketel int.3	Tubería PHE a caldera int.3
26	Pipe Boiler PWT int.4	Chaudière de tuyauterie en PWT int.4 ev	Scaldare la caldaia a PWT int.4	Buis boiler naar PWT int 4	Tubería de caldera para PWT int.4.

Bosch Thermotechnik GmbH
Sophienstr. 30-32
D-35576 Wetzlar / Germany