

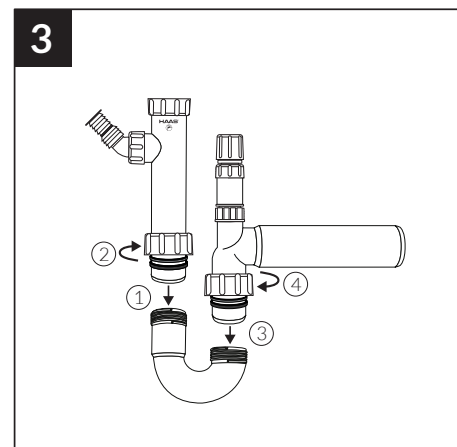
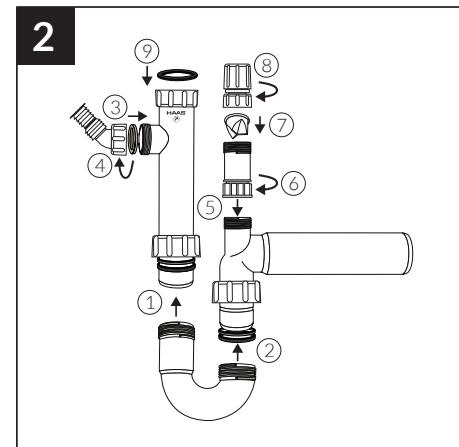
Technical drawing of a 90° elbow (90° Elbow) with dimensions and labels:

- Label 4** in the top left corner.
- HAAS** logo on the top vertical pipe.
- G** indicates the width of the top flange.
- Mittels Gewindeverlängerung um min. 5 cm aufbauen!** (Using thread extension to build up by min. 5 cm!) with a dashed circle around the elbow joint.
- 75-190** indicates the height of the vertical section.
- D** indicates the diameter of the horizontal pipe.
- 134** indicates the height of the horizontal section.
- 80** indicates the width of the bottom flange.
- 70-220** indicates the length of the horizontal section.

# 1

This diagram shows the components of a shower head assembly, numbered 1 through 10. The parts are as follows:

- 1: A long, vertical shower head body with a curved neck and a circular shower head face. It has a "FUGASS 2" label on the neck.
- 2: A curved shower head body with a circular shower head face.
- 3: A long, horizontal shower head body with a circular shower head face.
- 4: A curved shower head body with a circular shower head face.
- 5: A shower head face with a circular shower head face.
- 6: A shower head face with a circular shower head face.
- 7: A shower head face with a circular shower head face.
- 8: A shower head face with a circular shower head face.
- 9: A shower head face with a circular shower head face.
- 10: A shower head face with a circular shower head face.



Technical drawing of a 1/2 inch HAAB T-junction. The drawing shows the main body with a 1/2 inch HAAB connection at the top, a 1/2 inch HAAB connection on the side, and a 1/2 inch HAAB connection at the bottom. The dimensions are as follows:

- Overall height: 75-190
- Overall width: 70-220
- Distance from the top connection to the side connection: 80
- Distance from the side connection to the bottom connection: 134
- Label 'D' points to the side connection.
- Label 'G' points to the top connection.
- Text: 'Mittels Gewindeverlängerung um min. 5 cm aufbauen!' (Using thread extension to build up by min. 5 cm).

# 760093